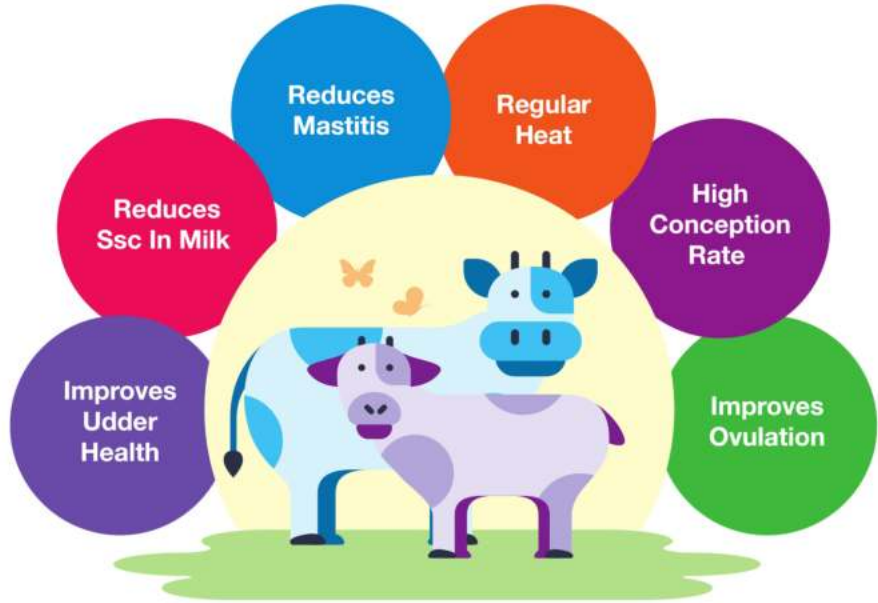




# FINMIN

## Complete trace mineral premix- a true fertility improver



### Benefits:

- Improves health & production performance;
- Improves fertility & reproductive health
- Develops immunity

### Feeding Direction:

- Cow & buffalo: 30-40g daily
- Sheep & goat: 25g daily
- in feed: 1 kg per 100 kg

### Contains: each 1kg

Vitamin A	700000 IU
Vitamin D3	70000 IU
Vitamin E	275 mg
Niacin	1 g
Iodine	325 mg
Se	10 mg
Magnesium	6g
Potassium	100 mg
Sodium	6 mg
Sulphur	7.2 mg
Ca	217g
P	90 g
Cobalt ( as glycinate)	150mg
Copper ( as glycinate)	3.5 g
Iron ( as glycinate)	1.5g
Zinc ( as glycinate)	8g
Chromium	65 mg

### Presentation:

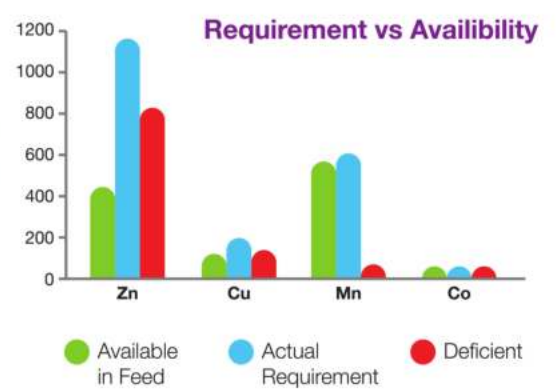
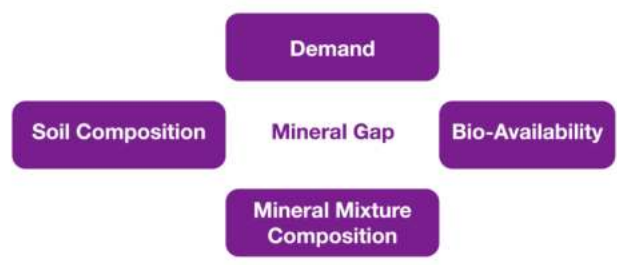
- 1 KG
- 200 GM

Shelf Life: 3 years from the date of manufacturing

Storage: Store in a cool, dry place  
Caution: Keep reach out of Children

Trace minerals and vitamins AD 3 and E are very important and are to be supplemented during first stage of lactation to condition body during post parturient period. Deficiency may lead to poor body condition resulting into infertility and repeat breeding cases in farm animals.

Few points to remember- soil is deficient in minerals so plants are also deficient. Availability in body tissue depends on so many extrinsic factors like- Sales of minerals used in formula, bioavailability etc. FINMIN is a highly bioavailable trace mineral and vitamin premix which is designed as per international recommendation.



Animal Feed Supplement  
NOT for Human Consumption



Imported & Marketed By



JESSCOT TRADING LTD.  
House 2, Road 17, Sector 13, Uttara Model Town,  
Uttara, Dhaka-1230, Bangladesh  
Web: www.jesscot.com, Email: info@jesscot.com

Manufactured By



FINRAY BIOTECH INC.  
Baroda- 390019, Gujarat, India,  
www.finraybiotech.com  
Email: corporate@finraybiotech.com



This product is free from Chloramphenicol, Nitrofurantoin, Antibiotic, Melamine and Genetically Modified Organism